



MONTHLY MEMBERSHIP PROGRESS REPORT

District 3 O

Results as of: 7/31/2015

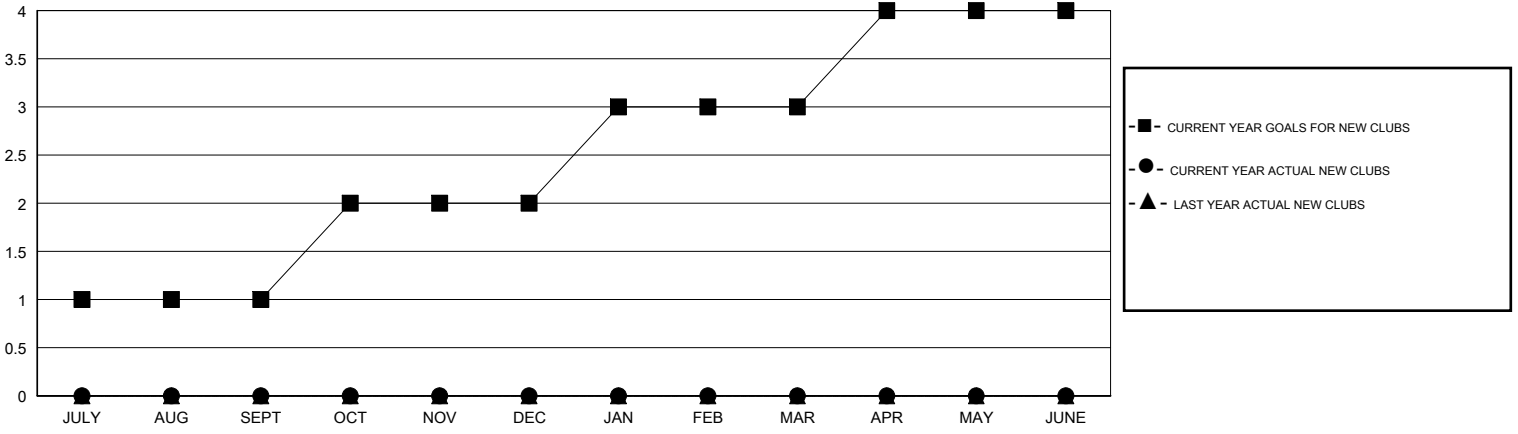
GMT: HAL GRIFFIN

LOCATION OKLAHOMA

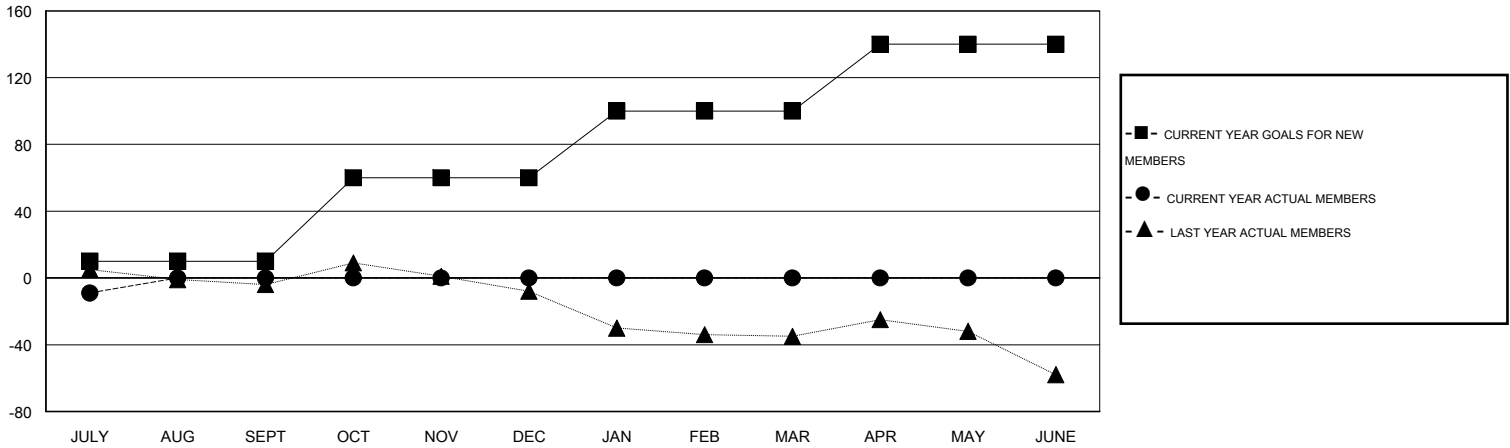
GMT CA 1

| Clubs | | | | | Members | | | | |
|-----------------------|---------------|-----------|---------------|---------------|-----------------------|-----------------|-------------------------------|-----------------|---------------|
| RESULTS FOR 2015-2016 | | | | | RESULTS FOR 2015-2016 | | | | |
| QUARTER | NEW CLUB GOAL | NEW CLUBS | DROPPED CLUBS | NET GAIN/LOSS | QUARTER | NEW MEMBER GOAL | CHARTER AND NEW MEMBERS ADDED | DROPPED MEMBERS | NET GAIN/LOSS |
| JULY/AUG/SEPT | 1 | 0 | 0 | 0 | JULY/AUG/SEPT | 10 | 6 | 15 | -9 |
| OCT/NOV/DEC | 1 | 0 | 0 | 0 | OCT/NOV/DEC | 50 | 0 | 0 | 0 |
| JAN/FEB/MAR | 1 | 0 | 0 | 0 | JAN/FEB/MAR | 40 | 0 | 0 | 0 |
| APR/MAY/JUNE | 1 | 0 | 0 | 0 | APR/MAY/JUNE | 40 | 0 | 0 | 0 |

GOALS AND ACTUAL NEW CLUBS CUMULATIVE



GOALS AND ACTUAL MEMBERS CUMULATIVE



| | | | |
|------------------------|---|----------------------------------|--------------|
| DROPPED CLUBS: 0 | 3 CLUBS OF 38 ADDED 1 OR MORE NEW MEMBERS | <u>GENDER DISTRIBUTION</u> | |
| <u>DROPPED MEMBERS</u> | | MALE | 585 (64.50%) |
| DECEASED | 0 | FEMALE | 322 (35.50%) |
| CLUB CANCELLED | 0 | <u>FAMILY UNIT MEMBERS</u> 213 | |
| OTHER | 15 | <u>HEAD OF HOUSEHOLD</u> 104 | |
| TOTAL | 15 | <u>NON-HEAD OF HOUSEHOLD</u> 109 | |

[CLICK HERE FOR HEALTH ASSESSMENT DATA](#)